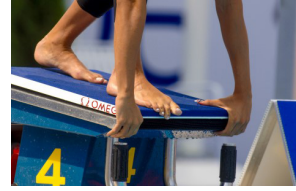


Your child is invited to a Youth Heart Screening Event hosted by Liberty High PTSA:



# Nick of Time Foundation ECG Youth Heart Screening

**Sudden Cardiac Arrest** is the leading cause of sudden death in exercising at “at-play” young people and is typically the result of an undiagnosed structural or electrical problem.

Have your child’s heart screened for risk factors associated with Sudden Cardiac Arrest.

**WHEN:**

**Weds. April 4, 2018**  
**9am-3pm**

**WHERE:**

**Hosted at: Liberty High School Gymnasium**  
**16655 SE 136th Street**  
**Renton, WA 98059**

**WHO:**

**Any youth ages 14 to 24 yrs. old**  
**Regardless of where they attend school**

**REGISTER:**

**REGISTRATION INFO:**

P/U forms at the High School main office  
OR download: [www.nickoftimefoundation.org](http://www.nickoftimefoundation.org)  
Complete and return to HS Athletic Office or  
scan/email: [MenezesJ@issaquah.wednet.edu](mailto:MenezesJ@issaquah.wednet.edu)

**Questions? Please call:**

Registration, Ms. Menezes at 425.837.4806  
Heart Screen, Ms. Valach, RN at 425.837.4812

**COST:**

\$25 tax deductible donations may be made online at  
[www.nickoftimefoundation.org](http://www.nickoftimefoundation.org) for “Liberty HS  
Screen”, or with cash or checks to “Nick of Time  
Foundation”, may be submitted with forms or at event.

**NoTF ECG Youth Heart Screen consists of:**

- A Heart Health Survey investigating signs and symptoms or family history of a cardiac condition
- Blood pressure
- Heart Sounds Physical
- 12 Lead Electrocardiogram (ECG)
- Limited Echocardiogram is conducted in cases with a positive finding on history, physical exam, or ECG.
- **All results are reviewed onsite by cardiologists and sports physicians experienced in ECG heart screens.**

**The goals of the NoTF ECG Youth Heart Screenings:**

- To detect hidden heart conditions with the potential for sudden death in the young.
- To reduce sudden cardiac death through early detection and appropriate medical interventions, activity modification.
- To raise awareness and educate schools and communities about sudden cardiac arrest, warning symptoms, and the value of heart screening.
- Integrated screening programs utilizing ECG offer the only model proven to reliably identify children at risk for SCD



**REGISTER  
EARLY!  
500 SCREENING  
APPOINTMENTS  
AVAILABLE**

